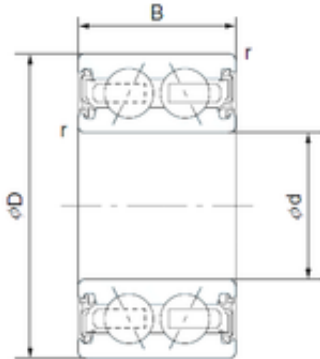




BEARING DRIVESHAFT, INC.

40 mm x 57 mm x 24 mm CYSD 4608-2AC2RS
angular contact ball bearings



Bearing No. 4608-2AC2RS

Size	40x57x24 mm
Bore Diameter	40 mm
Outer Diameter	57 mm
Width	24 mm
d	40 mm
D	57 mm
B	24 mm
C	24 mm
Basic dynamic load rating (C)	15 kN

4608-2AC2RS Bearing 2D drawings and 3D CAD models