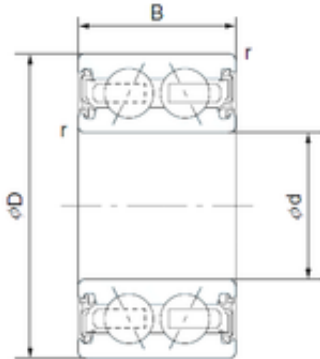




BEARING DRIVESHAFT, INC.

35 mm x 45 mm x 20 mm CYSD 4607-7AC2RS
angular contact ball bearings



Bearing No. 4607-7AC2RS

Size	35x45x20 mm
Bore Diameter	35 mm
Outer Diameter	45 mm
Width	20 mm
d	35 mm
D	45 mm
B	20 mm
C	20 mm
Basic dynamic load rating (C)	6,2 kN

4607-7AC2RS Bearing 2D drawings and 3D CAD models