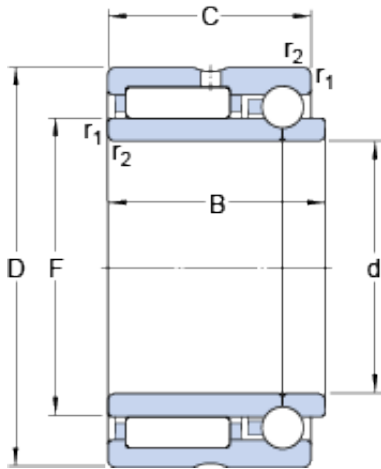




# BEARING DRIVESHAFT, INC.



nkib 5904 Bearing 2D drawings and 3D CAD models

20 mm x 37 mm x 25 mm skf nkib 5904 bearing

Bearing No. nkib 5904

Size	37x20x25 mm
Bore Diameter	37 mm
Outer Diameter	20 mm
Width	25 mm
d	20 mm
D	37 mm
B	25 mm
C	23 mm
F	25 mm
r <sub>1,2</sub> - min.	0.3 mm
d <sub>a</sub> - min.	22 mm
D <sub>a</sub> - max.	35 mm
r <sub>a</sub> - max.	0.3 mm
Basic dynamic load rating, radial direction - C	21.6 kN
Basic static load rating, radial direction - C <sub>0</sub>	28 kN
Basic dynamic load rating, axial direction - C	3.8 kN
Basic static load rating, axial direction - C <sub>0</sub>	4.2 kN
Fatigue load limit, radial direction - P <sub>u</sub>	3.4 kN
Fatigue load limit, axial direction - P <sub>u</sub>	0.176 kN
Reference speed	15000 r/min
Limiting speed	17000 r/min



## BEARING DRIVESHAFT, INC.

Category	Roller Bearings
Inventory	0.0
Manufacturer Name	SKF
Minimum Buy Quantity	N/A
Weight / Kilogram	0.115
EAN	7316577710062
Product Group	B04144
$r_{1,2}$ min.	0.3 mm
$d_a$ min.	22 mm
$D_a$ max.	35 mm
$r_a$ max.	0.3 mm
Basic dynamic load rating, radial direction C	21.6 kN
Basic static load rating, radial direction $C_0$	28 kN
Basic dynamic load rating, axial direction C	3.79 kN
Basic static load rating, axial direction $C_0$	4.21 kN
Fatigue load limit, radial direction $P_u$	3.35 kN
Fatigue load limit, axial direction $P_u$	0.176 kN
Mass bearing	0.11 kg